

P25 Compact Series – Stainless Steel Quadrature Trackerball

DESCRIPTION

The P25 Compact Series are rugged professional Trackerballs. The device incorporates the same proven technology found in the well-established P38 range, providing the user with the same high specification Trackerball in a smaller package.

The ball and trim are made from high quality stainless steel and provide extra protection in public access points where vandal attacks are commonplace. High-grade stainless steel shafts and bearings ensure a solid and precise pointer control while the patented floating seal technology limits ingress of aqueous solutions and particulates. The unit has been designed to be back of panel mounted as part of OEM keyboards and consoles. The P25 is ideal for applications where space is at a premium.



FEATURES AND APPLICATIONS

- Sealing to IP65 (NEMA 6)
- Outputs: Quadrature
- Smooth operation in rugged environments
- Stainless steel shaft and bearings
- Custom connector options
- Optional anti-vandal kit
- For use in medical, kiosk and industrial applications
- OEM custom solutions available

SPECIFICATIONS

Mechanical

Weight	90 grams
Ball	AISI 440 stainless steel, Ø25 mm
Top flange material	AISI 316 stainless steel (optional)
Tracking force	50 grams nominal continuous – sealed (IP65)
Housing material	ABS in black
Mounting position	Horizontal to 60° (IP65 sealed)
Sealing material	PTFE composite IP65 rated (qualified @ 25°C static)

Electrical

Protocol	Quadrature
Supply voltage	5V D.C. \pm 5%
Supply current	10mA typical
Resolution	158 pulses per ball revolution (633 counts per ball revolution)
Output connector	6 Way JST, right-angled header, part no. S6B-PH-SM3-TB
Mating output connector	6 Way JST connector, part no. PH, CR or KR types

Environmental

Operating temperature	0°C to +65°C
Storage temperature	-40°C to + 85 °C
Humidity	30% min, 95% max, non-condensing
Vibration	6-500Hz at 49m/s ² in all 3 axes
Shock	100g vertical axis, 40g horizontal axis
Lifetime	10 million ball revolutions (non sealed) >2 million ball revolutions – (sealed)
Impact	10 Joules (with anti-vandal Kit)
ESD	12kV air-discharge and 6kV contact discharge.

CONNECTION DETAILS

Connection is made to the P25 Trackerball by means of latching JST connectors (or equivalent).

Tables 1 and 2 highlight the connection details. Custom connections are available (please contact your local sales office for further details).

Output connector:

Pin Number	Quadrature
1	X1
2	X2
3	+5V D.C.
4	Y1
5	Y2
6	0V

Table 1 Output connections

Description: 6 way, 2mm pitch, right-angled connector
 Manufacturer: JST (or equivalent)
 Part No: S6B-PH-SM3-TB
 Mating connector: PH, CR or KR types

Backlight connector (optional):

Pin Number	Function
1	+5VDC
2	0V

Table 2 Backlight connections

Description: 2 way, 2mm pitch, right-angled connector
 Manufacturer: JST (or equivalent)
 Part No: S2B-PH-SM3-TB
 Mating connector: PH, CR or KR types

OPTIONAL CABLE ASSEMBLIES

Standard cable assemblies are available for connection to the P25 Trackerball (see table 3). Alternative cable assemblies can also be supplied to customer specifications (please contact your local sales office for further details).

Cable Type	Cable Part No.	Description
Output cable	T9902212	Output cable, 2 metres, 6 way JST to bare ends
Backlight cable	T9902211	Backlight cable, 2 way JST to bare wires, 500mm long

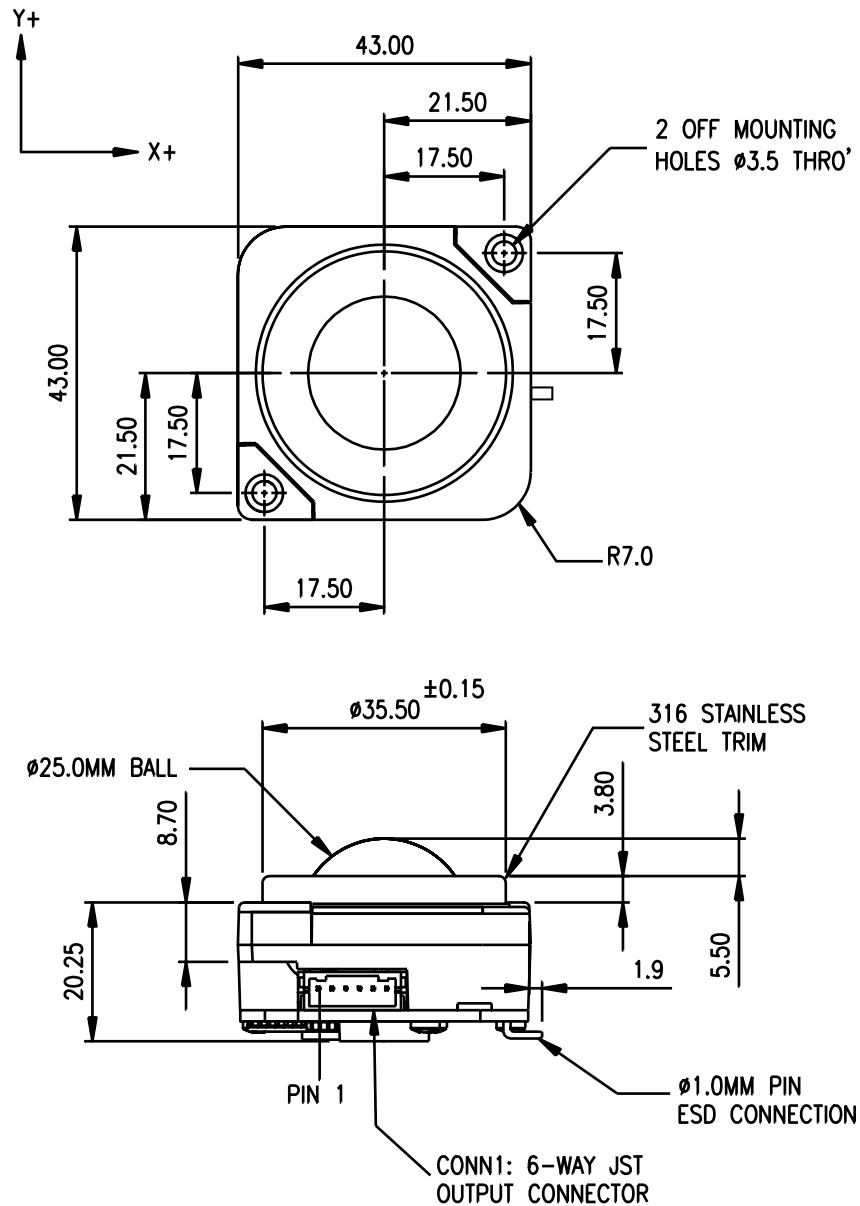
Table 3 Cable assemblies

OPTIONAL ANTI-VANDAL KIT

This optional back plate enables the unit to absorb a very high level of abuse/impact. When mounted correctly by the end-user, the back plate will limit any hostile impacts subjected to the device during operation in public access points. The back plate provides protection for shafts, bearings and other components within the unit and ensures continual functionality under demanding conditions. Typical applications include public information kiosks and consoles. The kit includes all necessary fasteners (see datasheet DS25301 for mounting details).

(Please contact sales for further details/specifications).

DIMENSION DRAWING



Dimensional drawing specifies factory default orientation.

All dimensions are in mm unless otherwise stated.

Tolerances +/- 0.2mm unless otherwise stated

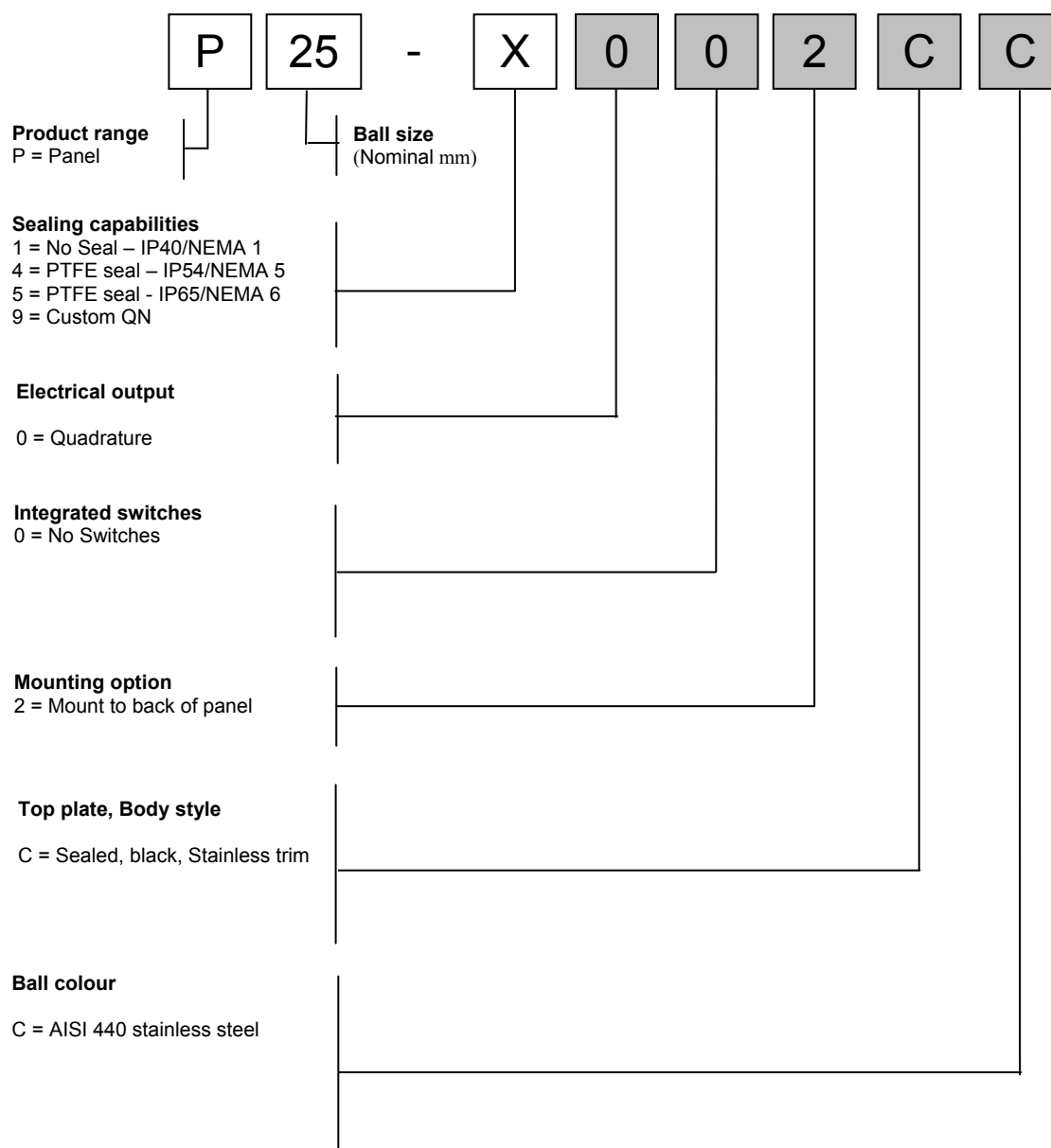
Please note that an IGES model is available on request. Please contact your local sales office for more information.

OPTIONAL ANTI-VANDAL KIT

This optional back plate enables the unit to absorb a very high level of abuse/impact. When mounted correctly by the end-user, the back plate will limit any hostile impacts subjected to the device during operation in public access points. The back plate provides protection for shafts, bearings and other components within the unit and ensures continual functionality under demanding conditions. Typical applications include public information kiosks and consoles. The kit includes all necessary fasteners (see datasheet DS25301 for mounting details).

(Please contact sales for further details/specifications).

Product ordering code **P25-XXXXXX**. Please construct your standard product ordering code by selecting the numbers and letters to suit your specification:



*Non standard colour – MOQ and lead-time may apply

Ordering Example:

P25-5002CC: Panel 25mm, sealed IP65, Quadrature output, no switches, mount to back of panel, steel trim, steel ball.

OPTIONAL EXTRAS

- Anti-vandal option (See datasheet DS25301)
- Optional external switches (See datasheet DS25201)
- Customer specific colour matching (MOQ applies)
- Cable assemblies (See datasheet DS25201)

Contact your local distributor for further details on product variants and custom specifications.